

BROCHURE

X2Now — Any Platform to ServiceNow Migration Utility

Outcreating ServiceNow
Migration with Clarity,
Control, and Speed



Guiding the Move to ServiceNow

X2Now is a guided migration utility that helps organizations move selected assets from legacy CRMs and business platforms into ServiceNow with speed and control. It imports foundational structures, maps fields and entities, and transforms configured artifacts through a governed, step-by-step workflow. A unified progress view keeps business and IT aligned from readiness through completion.

What Slows Platform Migrations

Platform migrations often miss timelines due to limited visibility, inconsistent mapping rules, and fragmented execution.

Organizations face critical challenges such as:



Lack of clear asset inventory delays planning and increases rework



Inconsistent mapping rules create errors and misaligned data structures



Late discovery of dependencies disrupts timelines and increases effort



Limited visibility into progress creates uncertainty for stakeholders



Automation assets are difficult to interpret, delaying migration decisions



Manual execution increases cost, risk, and delivery delays




Without a structured approach, migrations lead to inefficiencies, higher costs, and reduced confidence in outcomes.

A Path from Source to ServiceNow

X2Now reframes migration as a structured, repeatable pipeline that reduces manual effort and accelerates time-to-value on ServiceNow.

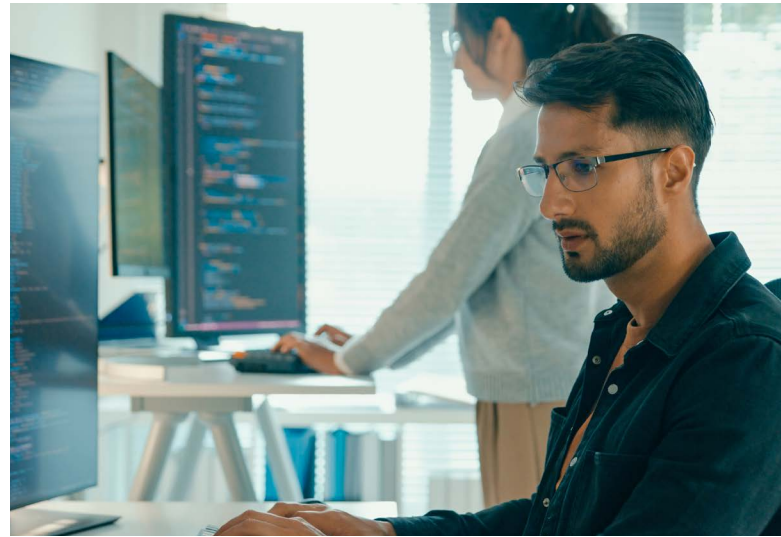
It imports the foundation first, applies configurable mappings, and executes transformations with governed checkpoints and locking. Progress tracking and exception reporting provide clarity on scope, status, and costs. AI-assisted summaries simplify automation understanding and reduce reverse engineering.

Core workflow:

-  **Import**
Scan and inventory source assets
-  **Map**
Align entities and fields using reusable patterns
-  **Transform**
Execute governed migration with tracking and exceptions handling

Core impact:

Fewer manual configurations, lesser retests, fewer stalled sprints resulting in lower migration effort and faster delivery.



Moving Faster with Control

- Move only what matters with modular scoping and reduced migration risk
- Establish a stable foundation to prevent downstream issues
- Achieve predictable outcomes with governed checkpoints and controlled execution
- Maintain visibility with centralized progress tracking
- Accelerate decisions with AI-assisted automation insights

From Migration to Outcomes with LTM

LTM combines proven migration expertise with a reusable, governance-led framework and AI-assisted insights, so you think disruptively to modernize to ServiceNow faster with lesser rework and clearer stakeholder visibility.

Define the Path Forward

By embedding ServiceNow X to Now capabilities within existing service workflows, the organizations successfully move from fragmented manual operations to an intelligent, AI-enabled service model. Automated triage, AI-driven knowledge generation, and intelligent decision support for operational efficiency while strengthening service governance and responsiveness.

Solutions by LTM are built to Outcreate the ordinary.



Contact us

LTMServiceNow.Communication@ltm.com

Schedule a 30-minute walkthrough to validate your migration scope and define a clear plan as follows.

- Source platform, key objects (tables or entities), volumes, and relationships
- Automation inventory (flows, rules, triggers) and critical business processes
- Target ServiceNow scope and environment details (instance, modules, constraints)

LTM is a global technology services and consulting company and the business creativity partner to the world's largest and most disruptive companies. We bring human insights and intelligent systems together to help enterprises across industries rewire their business models, accelerate innovation, and drive AI-centric growth. With our integrated operations, transformation, and business AI services, we design and deliver solutions that create new productivity paradigms and new roads to value. Together with 87,000 employees across 40 countries and our global network of hyperscaler partners, LTM — A Larsen & Toubro company — owns business outcomes for over 700 clients, helping them to not simply outperform the market, but to Outcreate it.