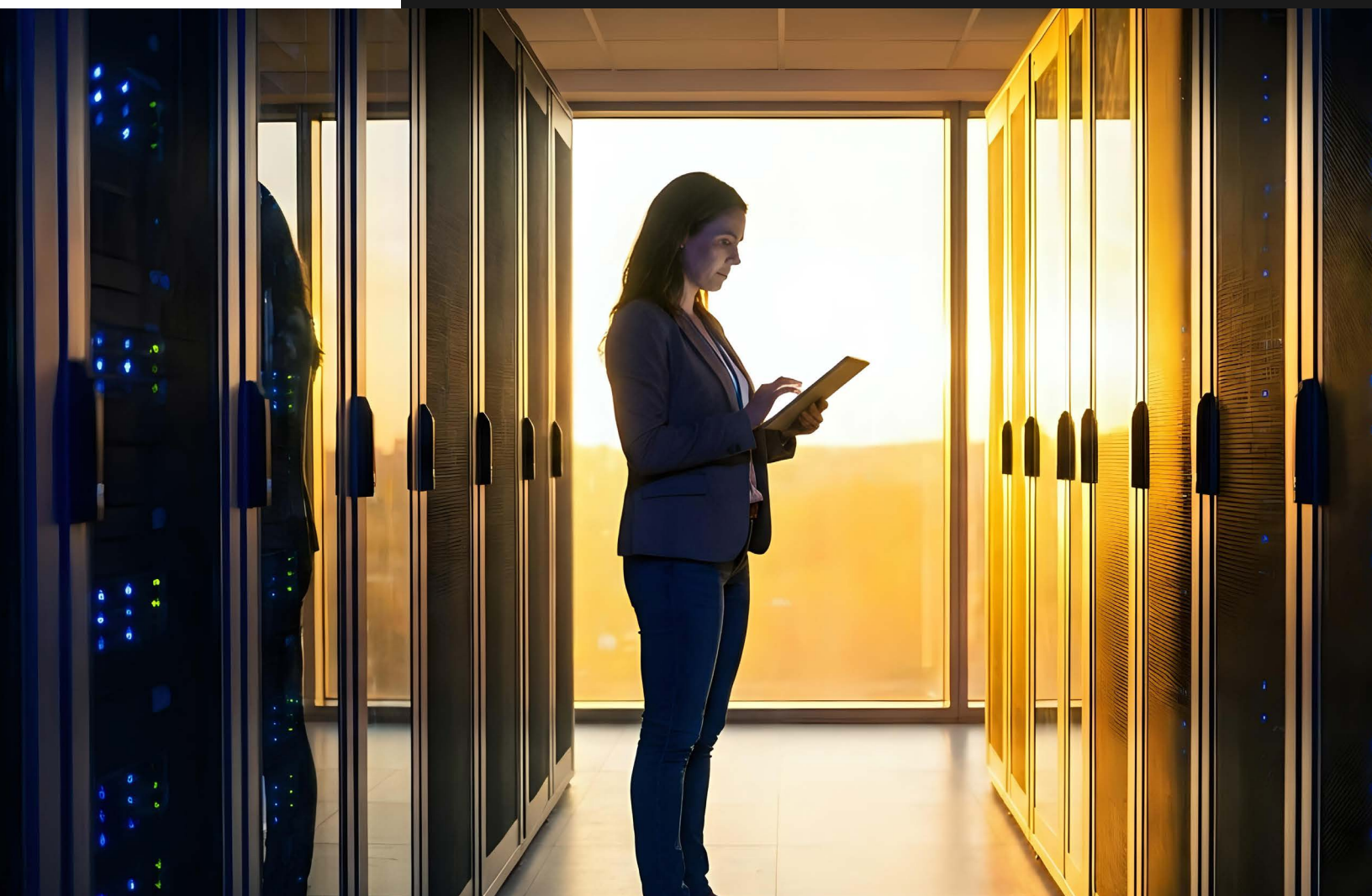


BROCHURE

Cisco-powered Network Modernization Services

Build Agile, Secure, and
Scalable Networks for
a Connected Future



Introduction

Enterprises must modernize their networks to keep pace with rapid digital innovation and the rise of artificial intelligence. Traditional infrastructure is no longer sufficient to support evolving business needs. Future-ready networks require scalable architecture, software-defined capabilities, and zero-trust security models -- the very pillars of Cisco's AI-ready networking portfolio spanning Cisco Catalyst, Nexus, Meraki, and Cisco Security.

LTM's Cisco-powered Network Modernization offering, built on Cisco's industry-leading networking and security portfolio, helps enterprises build intelligent, secure, and agile networks.

Cisco solutions in use: Catalyst SD-WAN, SD-Access, ACI, Meraki, Catalyst Center, Secure Access (SSE/SASE), Umbrella, ThousandEyes.



Modern Networks Face Growing Pressures

Legacy networks struggle to support today's cloud-driven, AI-first landscape. Traditional architecture often falls short in scalability, security, and real-time adaptability.

Organizations face:



Performance Bottlenecks

Legacy systems cannot meet growing throughput needs or support real-time workloads like AI, analytics, and automation.



Security Vulnerabilities

Older networks lack zero-trust enforcement, making them more vulnerable across LAN, WAN, data centers, and edge environments.



Operational Inefficiencies

Outdated manual processes slow down network provisioning, increase downtime, and raise costs.



Lack of Agility

Traditional setups resist changes, failing to meet evolving service demands or multi-cloud connectivity needs.

A future-ready network must be:



Software-defined

Enables abstraction of services from hardware, supporting agile, microservice-driven architectures -- realised through Cisco SD-Access, Catalyst SD-WAN, and ACI fabric.'



Secure by Design

Adopts zero-trust models to protect data across all network layers and access points -- powered by Cisco Secure Access, Umbrella, ISE, Duo, Secure Firewall, and XDR with Talos threat intelligence.'



AI-powered

Uses machine learning to monitor performance, predict outages, and automate incident resolution in real time -- delivered by Cisco AI Assistant for Networking, Catalyst Center Assurance, Nexus Dashboard Insights, and ThousandEyes.'



Cloud-ready

Supports fast, secure connectivity across hybrid and multi-cloud environments using SD-WAN, SASE, and similar technologies -- using Cisco Catalyst SD-WAN with Cloud OnRamp, Cisco Secure Access (SASE), and Cisco Multicloud Defense.'

To stay competitive, businesses must move beyond device-centric models and adopt outcome-focused, automated network services built for scale, speed, and security -- the design principles at the heart of Cisco's AI-native networking architecture.

Our Solution

LTM's Cisco-based Network Modernization service helps enterprises build secure, scalable, and AI-ready networks across data centers, LAN/WAN, cloud, and edge -- engineered on the full Cisco portfolio: Catalyst switching and wireless, Meraki cloud-managed networking, Catalyst SD-WAN, SD-Access, ACI, Nexus, and Cisco Security.

Built on five core principles—Cloud-First, Automation-First, Security-First, Wireless-First, and Internet-First—the solution improves agility, reduces manual effort, and lowers infrastructure and operational costs.

Secured Networks



Wireless First



Internet First



Cloud First



Automation First

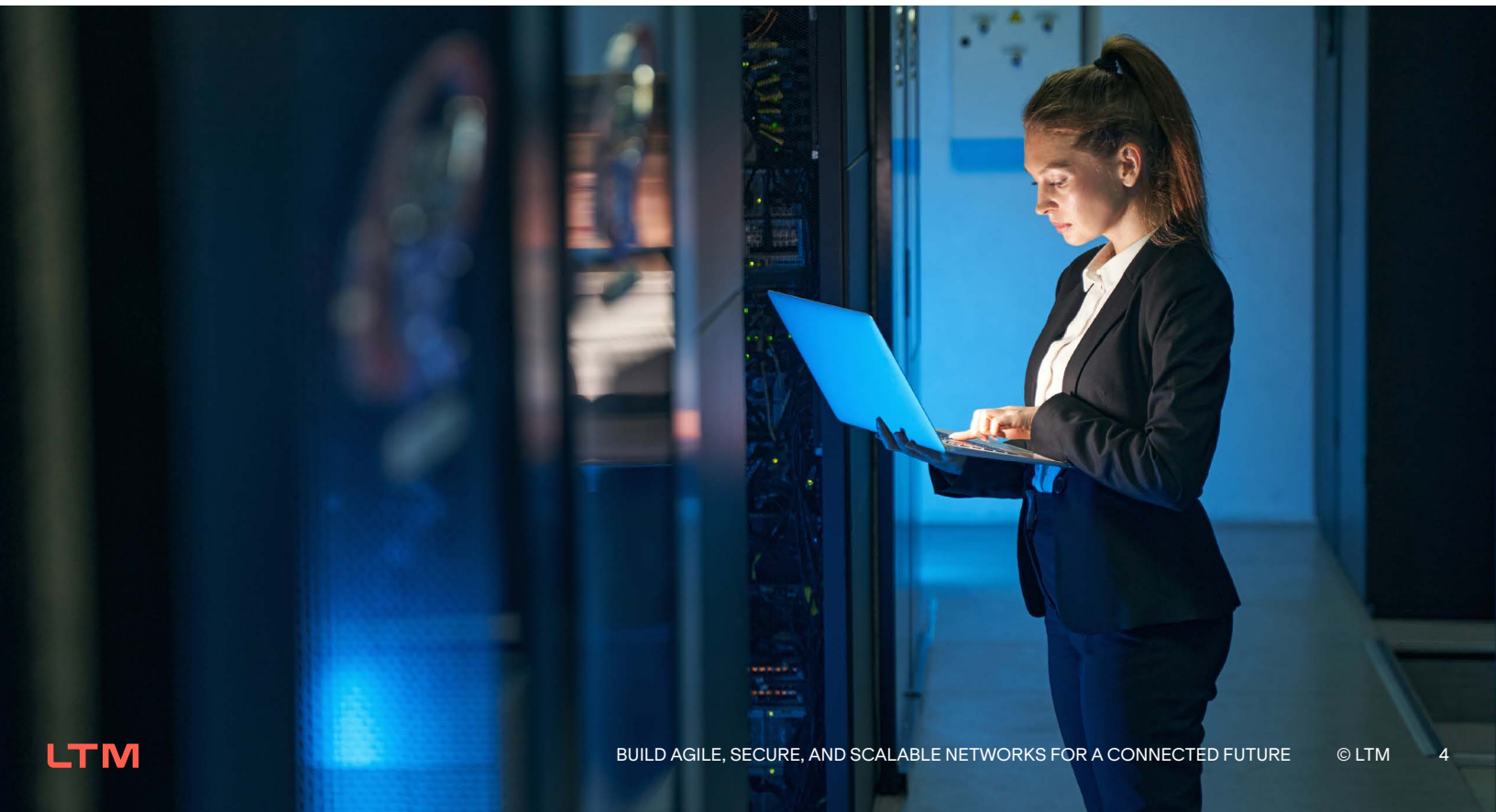


Security First

Data Centre SDN Solutions	Digital Enterprise LAN Solutions	Edge Connect Solutions	Platform Based Services
<p>Cisco ACI + Nexus Dashboard for AI powered DC Networking</p> <p>Cisco Nexus Hyperfabric and Cisco Silicon-One for AI DCs</p> <p>Micro-Sgmentation using Cisco Secure Workload</p> <p>DC Network Automation Services for IaC</p>	<p>Cisco SDA: Centralized LAN deployment and management across sites with Cloud First approach</p> <p>Wireless Networking: Wireless First approach with Catalyst / Meraki Wi-Fi 6E/7 solution for IT & OT networks</p>	<p>SDWAN Solutions: Cisco Catalyst SDWAN, Cloud OnRamp with Internet First approach</p> <p>Cisco Private 5G solution as managed service with partners</p> <p>SASE Solutions; Cisco Secure Access, Umbrella, Duo, ZTNA</p>	<p>Managed Services: AIOps powered by Cisco Catalyst Center, Meraki Dashboard, Nexus Dashboard, ThousandEyes and AppDynamics</p> <p>Professional Services using CVD, POCs, transformations and LTM-Cisco engineering</p>

It leverages Cisco's AI-native networking stack -- including Cisco Catalyst Center, Nexus Dashboard, AI Assistant for Networking, and ThousandEyes -- along with network function virtualization to optimize performance, simplify management, and accelerate time-to-value.

Our co-innovation framework with Cisco, combined with flexible managed services and Cisco-powered observability through ThousandEyes, AppDynamics, and Splunk, delivers full visibility, control, and governance.



Benefits



Accelerated transformation

Leverages Cisco SD-Access, Catalyst SD-WAN, ACI, and AI-driven automation through Catalyst Center to modernize networks faster and smarter.



Stronger security posture

Enhances protection with Cisco Secure Access (SSE/SASE), Umbrella, ISE, Duo, Secure Firewall, and XDR — applying micro-segmentation and zero-trust principles across all layers.



Lower costs, greener footprint

Consolidates infrastructure on energy-efficient Cisco Catalyst, Nexus, and Meraki platforms, reducing power, cooling, and rack footprint for long-term savings.



Simplified management

Offers single-point ownership through Cisco Catalyst Center, Meraki Dashboard, and Nexus Dashboard with full lifecycle visibility and proactive monitoring.



Optimized cloud access

Enables secure, low-latency multi-cloud connectivity through Cisco Catalyst SD-WAN Cloud OnRamp, Secure Access.



Enhanced network performance

Delivers improved throughput, latency, and resilience using Cisco Silicon One-based Catalyst 9000 and Nexus 9000 platforms, while driving cost efficiency.



Improved user experience

Boosts network availability and application responsiveness with Cisco ThousandEyes and AppDynamics digital experience monitoring across every location.



Faster provisioning

Shortens deployment cycles through Cisco Catalyst Center workflows, Meraki zero-touch provisioning, and Cisco Network Services Orchestrator (NSO).



Stronger IT alignment

Promotes architecture governance and co-innovation with your internal IT teams, backed by Cisco Validated Designs and joint LTM–Cisco engineering practices.



Why LTM?

We don't just modernize networks—we future-proof them.

At LTM, we bring together deep Cisco engineering expertise, a platform-led approach, and our strategic Cisco Gold Provider partnership to help enterprises build secure, scalable, and software-defined networks across cloud, data center, LAN, WAN, and edge. Our certified Cisco architects, dedicated Cisco Centers of Excellence, and proven delivery across Catalyst SD-WAN, SD-Access, ACI, Meraki, and Cisco Secure portfolios accelerate every stage of your Cisco-led modernization journey.

What sets us apart? A Cloud-First, Automation-First, and Security-First philosophy -- implemented through Cisco's industry-leading networking and security portfolio -- It accelerates modernization and delivers measurable business value, faster provisioning, simplified management, stronger security, and lower operational costs.

Our global delivery model ensures consistent execution, seamless support, and localization, so wherever your business operates, we're right there with you. We co-innovate with your IT teams and Cisco architects to ensure every network transformation is tailored, outcome-focused, and built to scale on Cisco Validated Designs.

Get an Assessment

Free Network inventory assessment and modernization roadmap.

Write to us at

info@ltm.com

LTM is a global technology services and consulting company and the Business Creativity partner to the world's largest and most disruptive companies. We bring human insights and intelligent systems together to help enterprises across industries rewire their business models, accelerate innovation, and drive AI-centric growth. With our integrated operations, transformation, and business AI services, we design and deliver solutions that create new productivity paradigms and new roads to value. Together with 87,000 employees across 40 countries and our global network of hyperscaler partners, LTM — A Larsen & Toubro company — owns business outcomes for over 700 clients, helping them to not simply outperform the market, but to Outcreate it.